

# SENNA PODS

## SCOPE

This standard specifies conditions and characteristics that should be present in Senna

## DEFINITIONS

Senna Pods are the fruit from the Senna Plant *Cassia Senna Delile* from the family *Fabaceae Leguminaceae*

## STANDARD SPECIFICATION

Senna Fruit are horny, compact, large, flat and thin in shape, has green to yellowish green color about 3.5-6.0 long and 1.4-1.8 broad. The pods contain 6-10 oval, flat green to yellowish green peas with protrusions connected to the seed shell

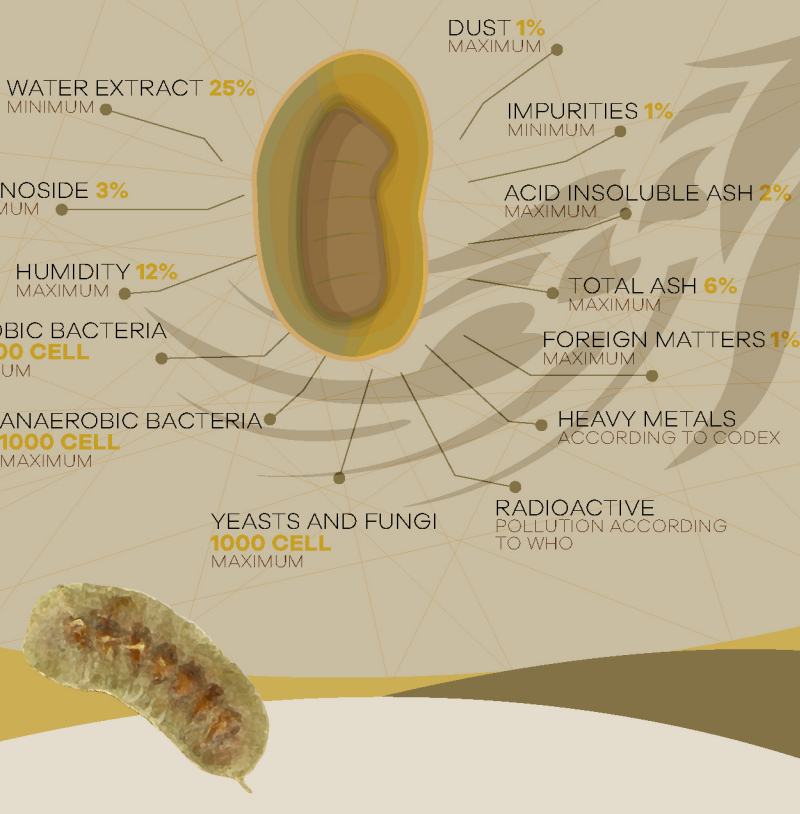
## HEALTH CONDITIONS

### GENERAL CONDITION

- The Senna Pods must be free of agglomeration and moulds
- The Senna pods must be free of foreign and off-odors
- Senna Pods must be entirely free of living and dead insects, their parts and the remains of rodents
- The Senna Pods must be free of fungus and of *E. coli* and *Salmonella*
- The Senna Pods must free of pesticide residues, fertilizers and harmful chemicals
- The Senna pods must be free of polluting substances and toxins such as aflatoxin
- The Senna Pods must be free from insect and rodents

## MEASUREMENT REQUIREMENTS

The following Requirements must be including in Senna Pod

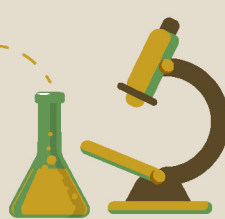


## SAMPLING

The Sudanese Standard Specifications and Measurements are to be followed when taking samples for testing number 307

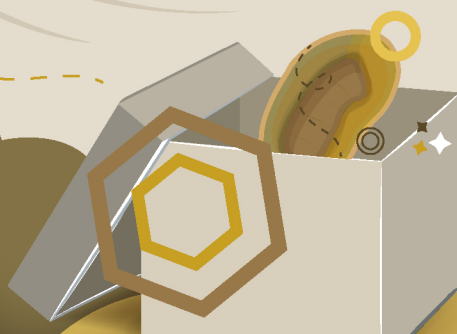
## METHODS OF INSPECTIONS AND TESTING

Conducted on the sample that has been taken according to item 10. The ratio of hydroxyl substance to anthracene is calculated as xenoside according to British Pharmacopoeia



## PACKAGING

The Senna pods must be packed in approved and recommended types of product labeling in clean, dry, storage well locked in a manner that preserves the properties of the product and does not affect it and not get affect by it



## THE IDENTIFYING LABEL

A clear identifying label must contain the following information

NAME OF CROP	TYPE OF THE CROP, NAME OF EXPORTING COMPANY, OR TRADE MARK	SEASON OF THE PRODUCTION	CODE
SENNA PODS 	BRAND NAME 		
COUNTRY OF ORIGIN 	PLACE OF MANUFACTURE 	NET WEIGHT (KG) 	CLEAR AND IRREMOVABLE WRITING 



### EXPIRE

The expire date of Senna Pods must not exceed more than two years from the date of production



### STORAGE

The Senna pods must be packed in a clean place, with low humidity and heat and protected from the light and dust

Epicarp contains stem cells with equal diameter that sometimes have multiple stomata and help cells and very few monoclonal cells Capillaries.

Hypodermis contains parenchymatous cells. Mesocarp that contains of parenchymatous texture that contains calicumoxalate prisms.

Epicarp conatins thick fiber walls often palisade to longitudinal axis of the fruit, however the Epicarps are tilted or parallel to the longitudinal axis of the fruit there are Hypodermis that made up of palisade cells with a thick walls.

The Endosperm has multi-surface cells and has gummy walls

## REFERENCES

1. British Pharmacopoeia (2000).
2. Quality control Methods for Medicinal Plants materials, World Health Organization (1998).
3. British Herbal Pharmacopia, Exter (1983)
4. British Herbal Pharmacopia, Exter Herbal Medicine Association (1996)
5. Youghen HW. Textbook of Pharmacognasy, ed. Philadelphia, Blackston (1950).
6. Ghazanfar SA. Hand Book of Arabian plant Baca Raton P L, CRC press (1994).
7. WHO Monographs on Selected Medicinal Plants - Volume 1, 295 pages (1999)