

CHICKPEA

SCOPE

This standard applies to the dry whole pulses other than oil seed intended for human consumption and does not include processed or broken leguminous seeds or seeds intended for animal feed or prepared with special standard

DEFINITIONS

Chickpea (Cicer arietinum L.) are seeds of leguminous plants which are distinguished from leguminous oil seeds by their low fat content

REQUIREMENTS

GENERAL REQUIREMENTS:

Dry Pulses other than oil seeds shall be

- 1 Clean and free from foreign odor.
- 2 Homogenous in color, size with natural texture
- 3 Entirely mature
- 4 Free from insects and their all stages, rodents and their residues filth.
- 5 Seeds shall not be germinated
- 6 Seeds shall not be genetically modified



TECHNICAL REQUIREMENTS

DO/ pulses shall comply with the following technical requirements

WEIGHT OF 100 SEED		
LARGE SEED (G) MORE THAN 30UM ITEM 8		
MODERATE SEEDS (G) 20 - 30		
SMALL SEED (G) LESS THAN 20		
MOISTURE % (MAX) 11 SDS 487/2010		
PROTEIN % (MIN) 19 SDS 1016/2010		
FOREIGN MATTERS & IMPURITIES % (MAX) 3.0 SDS 4872/2010		
BROKEN SEEDS % (MAX) 1.0 SDS 4897/2011		
HYDRATION COEFFICIENT % (MIN) 100 SDS 3629/2006		
DAMAGED SEEDS % (MAX) 5.0 SDS 7970/2000		
MYCOTOXINS (MAX) PPB 15 SDS 2843/2006		
CADMIUM (MAX) PPM 0.1 AOAC 9991/2000		
LEAD (MAX) PPM 0.2		

■ MESURE
■ METHOD OF ANALYSIS

NOTE: THE TOTAL PERCENTAGE OF FOREIGN MATTERS AND IMPURITIES, BROKEN SEEDS AND DAMAGED SEEDS SHALL NOT EXCEED 7%.

-PESTICIDES RESIDUES SHALL NOT EXCEED THE PERMISSIBLE LIMITS STATED BY CODEX ALEMINTARIUS.

-RADIATION LEVEL SHALL NOT EXCEED 10 BQ/KG

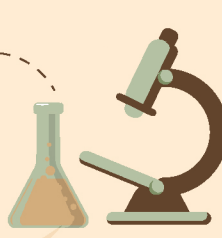
SAMPLING

Samples shall be drawn according to the Sudanese Standard Specifications DS 1005/2007

TESTING AND ANALYSIS

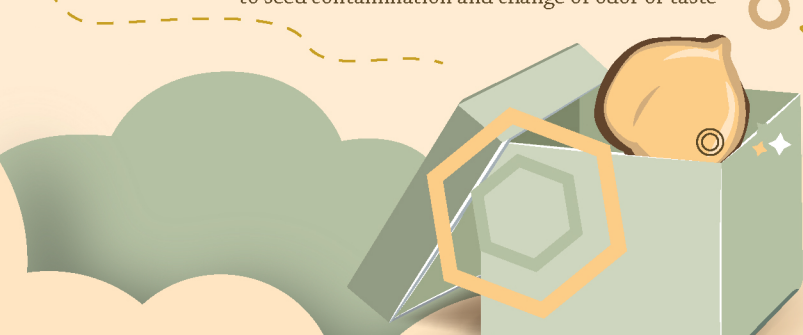
-Testing and analysis shall be carried in accordance with the methods shown in the table in items 3.2.1 of this standard specification.

-For testing 100 seed weight, 200 g sample shall be drawn, then 100 seeds shall be counted manually or automatically and then weighed in grams






PACKAGING

Pulses shall be packaged in sound, strong and cleaned containers and shall not lead to seed contamination and change of odor or taste



LABELLING

In addition to the requirements stated in SDS2889/2007 (Packed Food or Label Specification). The following information shall be shown on the package and the paper documents (for bulk material, information shall be in the paper document only)

NAME OF CROP	DATE OF PRODUCTION & EXPIRATION (MONTH/YEAR)	COUNTRY OF ORIGIN	NET WEIGHT (KG)
CHICKPEA 	 DATE		 KG



SHELF LIFE

One year from date of harvest for Chick pea.

STORAGE

Dry legumes shall be stored in clean premises free from materials that may be hazardous to health. The storage premises shall be maintained to preserve the product quality in accordance to the Sudanese Standard Specifications SDS 3891/2007

TRANSPORT

Grain legumes shall be transported under good conditions that protect the grains from weather changes, insects and rodents attack, contamination and damage.

Means of transportation shall be clean, free from any effects resulting from pesticides, herbicides, pungent or any toxic materials

REFERENCES

1. Codex Standards for Pulses (Codex Stand 171-1989).
2. Codex Alimentarius, Volume 7-1994.
3. Codex Standard 193-1995.
4. International Organization For Standardization (ISO).
5. Grain Legume Crops by Summerfield R.J and E.H Roberts Pub by: William Collins, Sons and Co ltd, 8 Greftor Street, nLondon W1X 3 LA, UK.1985.
6. Association of Official Analytical Chemist 2000.
7. م ق م 2728 المواصفة القياسية المصرية للبقوليات غير الزيتية الجافة رقم (2001/).
8. المواصفة القياسية الخليجية للبقوليات الجافة رقم (1997/837).